

F1-TRADE GmbH - Zweifelsheimer Weg 19 - 91448 Emskirchen



F1-TRADE GmbH

Zweifelsheimer Weg 19  
91448 Emskirchen  
Tel.: +49 (0) 911 9493279  
Fax.: +49 (0) 911 9493281  
E-Mail: info@f1-trade.com  
Internet: www.f1-trade.com  
VAT-No. DE273938430

Sehr geehrte Damen und Herren,  
Dear Sir and Madam,

wir können Ihnen die angefragte Maschine - Zwischenverkauf/Irrtümer vorbehalten - unverbindlich wie folgt anbieten:  
We can offer you the following requested machine(s) - subject to prior sale:

**Coupling Box for Folding Machines Heidelberg DCT-MCT-DCT**

Koppelbox für Falzmaschinen - Coupling Box for Folding Machines Heidelberg  
DCT-MCT-DCT  
Year 2007 - Serial-No. FH.GKA0-01828

Online-Video-Inspection by Skype-Video  
We would be very pleased with your visit - more machines on Stock  
Available Immediately - Can be inspect  
On Stock Emskirchen / Nürnberg - Can be test

Standort / Location: On Stock Emskirchen / Nürnberg

Price: 1200 Euro FCA Emskirchen/ Nürnberg

**View: Machine on Website**

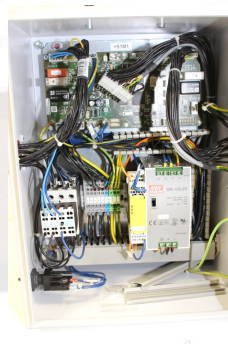
You are welcome to contact us by Messenger (WhatsApp-Telegram-Viber-Signal): +49(0)178-3648464  
Visit our website for the latest used machinery: <https://f1-trade.com/machines-list>

F1-TRADE GmbH - Zweifelsheimer Weg 19 - 91448 Emskirchen

F1-TRADE GmbH



Zweifelsheimer Weg 19  
91448 Emskirchen  
Tel.: +49 (0) 911 9493279  
Fax.: +49 (0) 911 9493281  
E-Mail: [info@f1-trade.com](mailto:info@f1-trade.com)  
Internet: [www.f1-trade.com](http://www.f1-trade.com)  
VAT-No. DE273938430



You are welcome to contact us by Messenger (WhatsApp-Telegram-Viber-Signal): +49(0)178-3648464  
Visit our website for the latest used machinery: <https://f1-trade.com/machines-list>